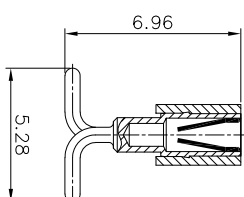
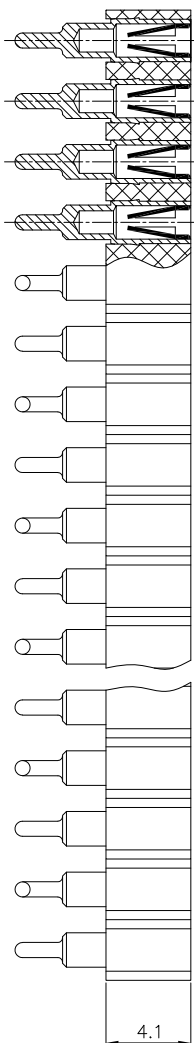


REV. NO.	REVISION NOTE	REVISER	DATE
V0	NEW DRAWING		2023/02/15

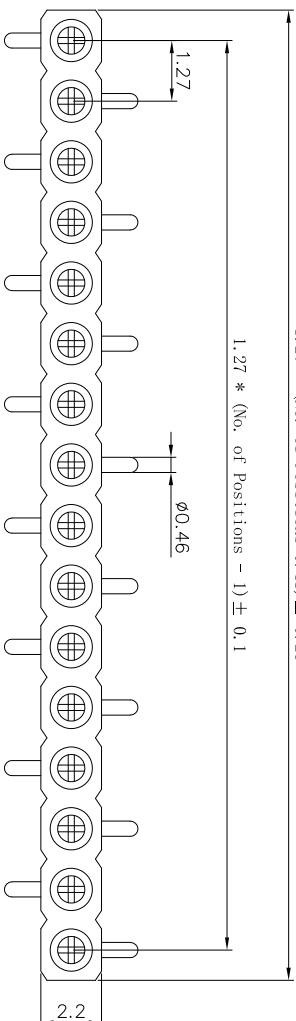
客户编码

XX-XXX



1.27 \* (No. of Positions+0.41) ± 0.25

1.27 \* (No. of Positions - 1) ± 0.1



## Technical Data

### Material:

Pin(outer sleeve): Brass machined CuZn38Pb2

Clip(contact 6 finger): **Beryllium copper**, heat treated

Plating(outer sleeve):

Tin plated:2um/80u"Ni, 5um/200u"Sn

Gold Plated:2um/80u"Ni,0.8 u" gold

Plating(contact): 2um/80u"Ni, gold or Tin plated

Insulator(black): PPS (UL94V-0)

### Electrical:

Current rating: 3Amps/contact max.

Contact resistance:  $\leq 4m\Omega$ /contactInsulation resistance:  $\geq 1000M\Omega$  at V=100V

Operating voltage: 60VAC/DC

### Mechanical:

Average insertion force with steel pin of

 $\varnothing 0.43mm/0.017''$ : <75g

Average withdrawal force with steel pin of

 $\varnothing 0.43mm/0.017''$ : >25g min.

Mechanical life cycle:min.200

Operating temperatures: Gold Plated:-55°C to+105°C

Tin plated:-40°C to+105°C

Soldering temperature: +260°C, 10s max

[Http://www.ciscomm.com](http://www.ciscomm.com)

 深圳市新世联电子有限公司  
 TEL: +86 (755) 29912370 FAX: 29912372
Tolerance Unless  
Otherwise Specified

Title

圆孔排母1.27mm 单排 立贴 (塑高4.1 塑宽2.2)

.X ~ ±0.30

.XX ~ ±0.25

.XXX ~ ±0.20

Angle ~ ± 3°



Units

mm

Scale

1:1

REV NO.

V0

Material No.

XXXXX-XXXXX-XXX-XX

Drawing By

LiuYang

Date

2023/02/15

Reviewed By

Date

Approval By